

B&C COOLSTAR /WOMEN - FW 752

ENGINEERED FLEECE



B&C
COLLECTION

OUTER WEAR /UNIT

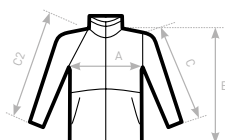
- Lightweight ergonomic full zip micro-fleece
- Maximum insulation for a minimum weight and compact design
- Double-side brushed for softness and featuring a supersoft, thermally efficient fleece
- Its light weight provides high flexibility to wear it as a jacket or as extra insulation layer, for outdoor or indoor
- Full front reverse zip fastener with zip pull
- Chin protector
- 2 front pockets with reverse zip fastening and zip pull
- Feminine cut
- Chest seams for waisted form
- Set-in sleeves
- Open hem and open cuffs
- Ergonomic arm and elbow sleeve shape for freedom of movement and comfort



- 100% anti-pilling polyester micro-fleece (144 filaments)
- 170 g/m²
- XS - S - M - L - XL - 2XL
- 5 pcs/pack & 15 pcs/carton



DUO♂
CONCEPT
with B&C Coolstar /men



C2= RAGLAN

SIZES [CM]

B&C COOLSTAR /WOMEN FW 752	XS	S	M	L	XL	2XL	3XL
A HALF CHEST	43,5	46,5	49,5	52,5	56,5	60,5	-
B BODY LENGTH	62,5	63	64	66	67	69,5	-
C SLEEVE LENGTH	61	62	63	64	65,5	67	-