

GILDAN



64800L

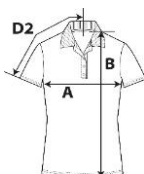
Softstyle Ladies' Double Piqué Polo

DETAILS

Weight
Content
Yarn Count
Features

177.0 G/SqM (White 172.0 G/SqM)
100% Combed Ring Spun Cotton
31/1
Contoured welt collar
Rolled forward topstitched shoulder
4 colour-matched buttons
Clean finished reversed placket with reinforced bottom box
Twin needle sleeve and bottom hems
Semi-Fitted
High stitch density fabric
Tear away label
Bangladesh
S-2XL
S - 2XL 36 PIECES
15
75

Country of Origin
Sizes
Case Packs
Colours
SKU's



SPECIFICATIONS

| Centimeters | Tol- | Tol+ | S | M | L | XL | 2XL |
|---|-------|-------|--------|--------|--------|--------|--------|
| Chest (A) | 2.000 | 2.000 | 42.000 | 45.000 | 50.000 | 53.500 | 58.000 |
| Length from HPS (B) | 2.500 | 2.500 | 64.500 | 67.000 | 69.500 | 72.000 | 74.500 |
| Sleeve length (Centre back) (D2) | 2.000 | 2.000 | 37.500 | 39.000 | 40.500 | 42.500 | 45.000 |

| Inches | Tol- | Tol+ | S | M | L | XL | 2XL |
|---|-------|-------|--------|--------|--------|--------|--------|
| Chest (A) | 0.750 | 0.750 | 16.500 | 17.750 | 19.750 | 21.250 | 23.000 |
| Length from HPS (B) | 1.000 | 1.000 | 25.500 | 26.500 | 27.500 | 28.500 | 29.500 |
| Sleeve length (Centre back) (D2) | 0.750 | 0.750 | 15.000 | 15.500 | 16.250 | 17.000 | 18.000 |

| COLOURS | Code | Sizes | Comments |
|----------------------|------|-------|---------------------------|
| Black | 036 | S-2XL | |
| Bright Salmon | 14G | S-2XL | |
| Charcoal | 042 | S-2XL | |
| Daisy | 098 | S-2XL | |
| Dark Chocolate | 105 | S-2XL | |
| Forest Green | 033 | S-2XL | |
| Heliconia | 010 | S-2XL | |
| Irish Green | 167 | S-2XL | |
| Navy | 032 | S-2XL | |
| Orange | 037 | S-2XL | |
| Red | 040 | S-2XL | |
| Ring Spun Sport Grey | 295 | S-2XL | 90% Cotton, 10% Polyester |
| Royal | 051 | S-2XL | |
| Sapphire | 026 | S-2XL | |
| White | 030 | S-2XL | |

CHANGES
Total Net Change 0 SKU's