

KARIBAN

REFERENCE : K572

SIZES : S M L XL XXL

COMPOSITION :

Main fabric : Cotton peach poplin 120 100%cotton

WEIGHT :

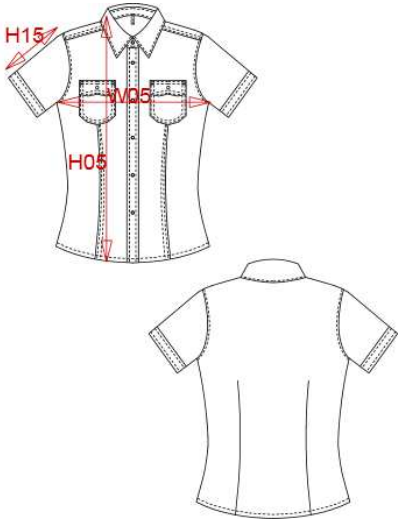
Main fabric : 120 gsm

FABRIC CONSTRUCTION AND FINISHING :

Garment washed

ARTICLE WEIGHT :

134 gr/pc



DESCRIPTION	
Français :	Chemise femme manches courtes cintrée
English :	Short sleeves fitted shirt
Nederlands :	Getailleerd dameshemd met korte mouwen
Deutsch :	Tailliertedamen-kurzarmbluse
Español :	Camisas de manga corta para mujer
Italiano :	Camicia donna maniche corte taglio sagomato
Português :	Camisa Tropical de senhora

COLORS	PANTONE SERIGRAPHIE
Black	Black
White	White
Navy	296C
Beige	7528C
Khaki	5743C

MEASUREMENT									
Description	Tol +/-	Tol +/- Taille max	S	M	L	XL	XXL		
W05 1/2 largeur poitrine / 1/2 chest width	2,0%	2,0%	49,50	51,50	53,50	56,50	59,50		
H05 Hauteur totale / Total height			63,25	64,75	66,25	68,50	70,75		
H15 Longueur manche / Sleeve length			19,50	20,50	21,50	22,75	24		

CARE LABEL				

PACKING	
Box	25 pcs / box S-XXL => L:52cm W:36cm H:20cm GW:6.50kg NW:5.50kg